

The AWM-400G

OVERVIEW OF INNOVATIONS

Many years of experience in the sector of crimp technology, customer requests and intensive cooperation with professionals of different parties have been incorporated in the development of the new crimp applicator AWM-400G. The aim was to unifying the individual advantages of the different technologies and ideas.

TRIPLE ADJUSTMENT FOR OPTIMUM CUTTING TIME

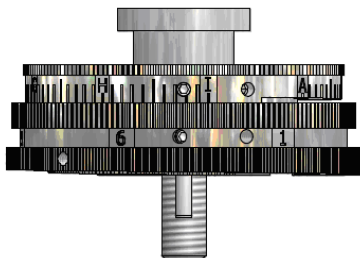
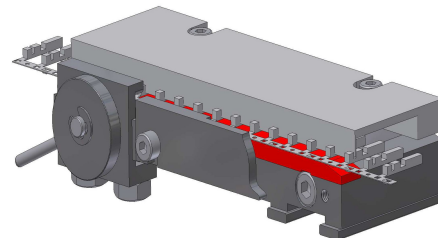
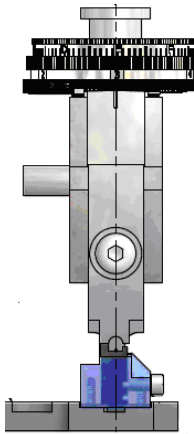


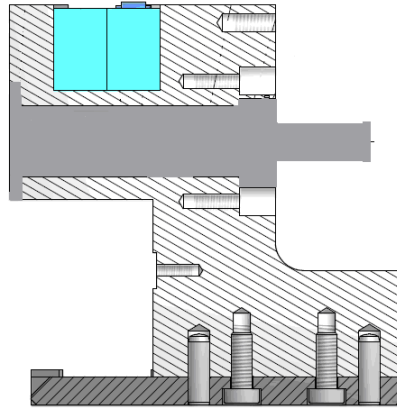
TABLE ADJUSTMENT & ALTERNATING SYSTEM



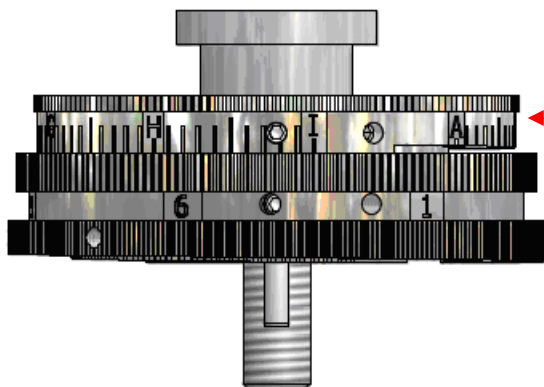
ADJUSTMENT FOR OPTIMUM CUTTING TIME



INTEGRATED IN-FEED CYLINDER IN THE BASE BODY UP TO INCREMENTS OF APPROX. 50 MM



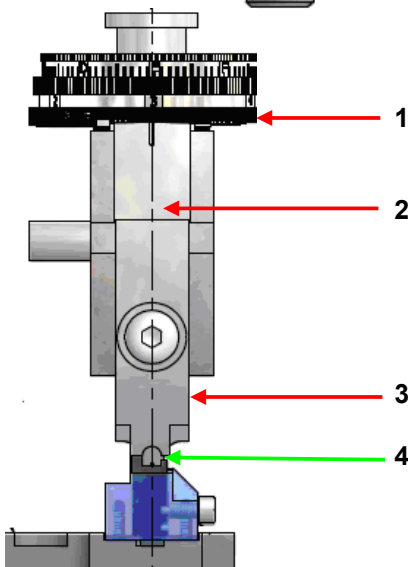
QUADRUPLE ADJUSTMENT



← **ADJUSTMENT WIRE CRIMPER**

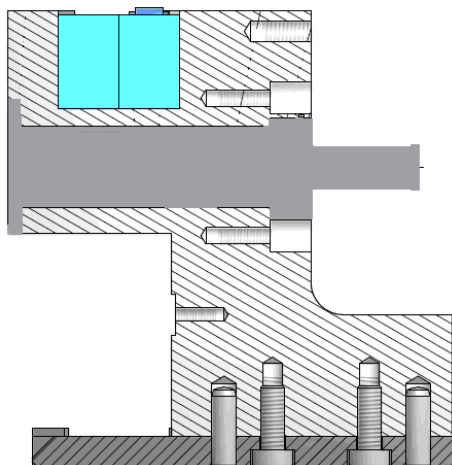
← **ADJUSTMENT INSULATION CRIMPER**

← **ADJUSTMENT FOR CUTTING TIME**



The wedge (2) and thereby the pressure piece (3) of the cutting time (4) is adjusted by turning the lower adjusting disc (1). The setting of the adjusting disc in increments of 0.02 mm permits an individual optimization.

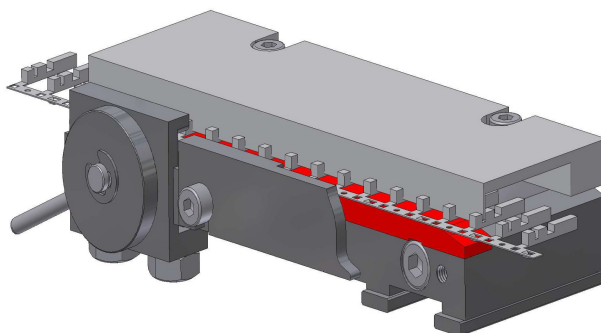
INTEGRATED IN-FEED CYLINDER IN THE BASE BODY



The integrated cylinder in the basic body allows feed settings for terminals up to increments of 50 mm without excess of the dimensions of customary pneumatics applicators.

The AWM-400G was designed for use in fully automatic systems as well as in manual workstations. This becomes possible by the direct control of the integrated pneumatic cylinder via an external valve. This control via an external valve can be realised without additional costs and extensive conversion work.

ADJUSTABLE TABLE WITH CHANGE SYSTEM



The adjustable table is pre-positioned in the suitable position for the terminal and is screwed with a block on the baseplate. Afterwards the table can be postadjusted by the additional possibility of adjusting of ± 4 mm and the table is put in the exact position to the anvil. Due to its unique system the table can be adjusted in a quick, precise and easy manner.

A cost-efficient rebuilding on another terminal can take place through changing the components, in particular, the exchange-plate (red) in combination with the anterior guide bar and upper guide bar.